



**NISSAN**  
**MY23.5 JUKE**  
**PRODUCT & PRICING GUIDE**  
**April 2023**

All Product & Pricing Information within refers to the Juke MY23.5 Model from April 1st, 2023

# GRADE SPECIFICATION

## XE



### SAFETY & SECURITY

- Cruise Control
- Speed Limiter
- Intelligent Emergency Braking with Pedestrian & Cyclist Recognition
- Intelligent Lane Intervention & Warning
- High Beam Assist
- Traffic Sign Recognition
- Automatic Hazard Signal + Emergency Stop signal
- Driver and Passenger Airbags
- Front side & Curtain airbags
- Height adjustable Seat Belts
- ISO-FIX + Top Tether Rear Seats
- TPMS with 4 wheel independent info
- ABS + EBD + Brake Assist
- Vehicle Dynamic Control + Traction Control
- + Active Trace Control + Active Ride Control
- Hill Start Assist
- Spare wheel
- Peripheral Alarm
- eCall

### EXTERIOR

- LED Lamps (Fr & RR & DRL & RR Fog)
- "Follow Me Home" Lights
- Manual Wipers
- 16" Steel wheels
- Electric Mirrors with Indicator
- Rear Spoiler
- Rear Drum Brakes

### INTERIOR

- Manual Air Con
- Radio + DAB + 4 speakers
- Bluetooth + FR USB + AUX + 12V
- 4.2" Colour Combimeter
- Monoform sporty seats
- Multifunctional Steering wheel
- Telescopic Steering wheel
- Electric windows x 4 + 1 touch driver
- Manual dimming rearview mirror
- Outside temperature sensor
- Driver & Passenger Vanity mirrors
- Driver & Passenger sliding/reclining seats
- Driver Seat Lifting
- Welcome/Ambient lighting on Console
- Cloth Seats
- 3 Rear headrests
- 60/40 rear seats
- Bottle holder Fr & Rr doors
- 2 Fr Cup holders in console
- Front & Rear room lights
- Luggage room light

### OPTIONS

#### 1. METALLIC PAINT - €600

*Optional extras may impact fuel consumption, CO2 & Road Tax figures*

### ENGINE

Engine	Transmission	HP	CO2	FUEL CONS.
1.0L Petrol	6 Speed Manual	114	133	5.8L

*Fuel Consumption & CO2s are tested under WLTP.*

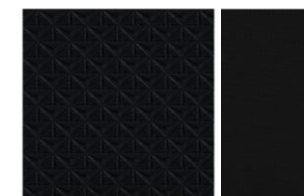
### PRICING

Variant	RRP	ROAD TAX
Manual	€26,995	€210

*\*Prices exclude dealer delivery related charges*



### INTERIOR TRIM



Black Embossed Fabric /  
Black Fabric

### WHEELS



16" Steel Wheels



# GRADE SPECIFICATION

## SV (ADDITIONIONAL TO XE IN **BOLD**)



## SAFETY & SECURITY

- Cruise Control
- Speed Limiter
- Intelligent Emergency Braking with Pedestrian & Cyclist Recognition
- Intelligent Lane Intervention & Warning
- High Beam Assist
- Traffic Sign Recognition
- Automatic Hazard Signal + Emergency Stop signal
- Driver and Passenger Airbags
- Front side & Curtain airbags
- Height adjustable Seat Belts
- ISO-FIX + Top Tether Rear Seats
- TPMS with 4 wheel independent info
- ABS + EBD + Brake Assist
- Vehicle Dynamic Control + Traction Control
- + Active Trace Control + Active Ride Control
- Hill Start Assist
- Spare wheel
- Peripheral Alarm
- eCall

## EXTERIOR

- LED Lamps (Fr & RR & DRL & RR Fog)
- "Follow Me Home" Lights
- Manual Wipers
- **17" Flex Wheels**
- Electric Mirrors with Indicator
- **Body Coloured Door handles**
- Rear Spoiler
- Rear Drum Brakes

## INTERIOR

- Manual Air Con
- Radio + DAB + 4 speakers
- **8" Touch Screen Display**
- **Apple Car play**
- **Android Auto**
- **Rearview Camera**
- Bluetooth + FR USB + AUX + 12V
- 4.2" Colour Combimeter
- Monoform sporty seats
- Multifunctional Steering wheel
- Telescopic Steering wheel
- **Voice Recognition**
- **Paddle Shift for A/T**
- Electric windows x 4 + 1 touch driver
- Manual dimming rearview mirror
- Outside temperature sensor
- Driver & Passenger Vanity mirrors
- Driver & Passenger sliding/reclining seats
- Driver Seat Lifting
- Welcome/Ambient lighting on Console
- Cloth Seats
- 3 Rear headrests
- 60/40 rear seats
- Bottle holder Fr & Rr doors
- 2 Fr Cup holders in console
- Front & Rear room lights
- Luggage room light
- **Chrome Interior Door handles**

## OPTIONS

### 1. COMFORT PACK - €600

- Auto Wipers
- Auto A/C
- Heated & Auto folding mirrors
- Heated Seat

### 2. METALLIC PAINT - €600

*Optional extras may impact fuel consumption, CO2 & Road Tax figures*

## ENGINE

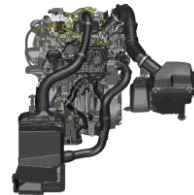
Engine	Transmission	HP	CO2	FUEL CONS.
1.0L Petrol	6 Speed Manual	114	133	5.9L
	7 Speed DCT		138	6.1L

*Fuel Consumption & CO2s are tested under WLTP.*

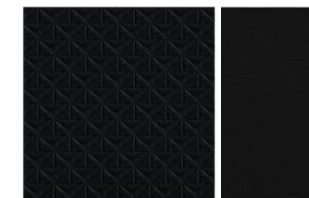
## PRICING

Variant	RRP	ROAD TAX
Manual	€28,900	€210
DCT	€30,900	€210

*\*Prices exclude dealer delivery related charges*



## INTERIOR TRIM



Black Embossed Fabric /  
Black Fabric

## WHEELS



17" Flex Wheels





# GRADE SPECIFICATION

## SV PREMIUM (ADDITIONIONAL TO SV IN **BOLD**)



### SAFETY & SECURITY

- Cruise Control
- Speed Limiter
- Intelligent Emergency Braking with Pedestrian & Cyclist Recognition
- Intelligent Lane Intervention & Warning
- High Beam Assist
- Traffic Sign Recognition
- Automatic Hazard Signal + Emergency Stop signal
- Driver and Passenger Airbags
- Front side & Curtain airbags
- Height adjustable Seat Belts
- ISO-FIX + Top Tether Rear Seats
- TPMS with 4 wheel independent info
- ABS + EBD + Brake Assist
- Vehicle Dynamic Control + Traction Control
- + Active Trace Control + Active Ride Control
- Hill Start Assist
- Spare wheel
- Peripheral Alarm
- eCall
- **Rear Parking Sensors**

### EXTERIOR

- LED Lamps (Fr & RR & DRL & RR Fog + **LED Front Fogs**)
- "Follow Me Home" Lights
- **Rain Sensing Wipers**
- **17" black + diamond cut alloy wheel**
- Electric, **Heated & Auto Folding** Mirrors with Indicator
- Body Coloured Door handles
- Rear Spoiler
- **Privacy Glass**
- **Rear Brake Discs**
- **Sharkfin Antenna**

### INTERIOR

- **Auto Air Con**
- **iKey + Push engine start/stop button + Walk-Away Lock & Approach Unlock**
- Radio + DAB + **6 speakers**
- 8" Touch Screen Display
- Apple Car play
- Android Auto
- Rearview Camera
- Bluetooth + **FR & RR USB** + AUX + 12V
- **7" Colour Combimeter**
- **NissanConnect Services**
- Monoform sporty seats
- Multifunctional Steering wheel
- Telescopic, **Leather Steering wheel**
- **Leather Gear Shift**
- Voice Recognition
- Paddle Shift for A/T
- Electric windows x 4 + 1 touch driver
- **eHandbrake w/ Auto Hold Function**
- **Auto dimming rearview mirror**
- Outside temperature sensor
- Driver & Passenger Vanity mirrors
- Driver & Passenger sliding/reclining seats
- Driver Seat Lifting
- Welcome/Ambient lighting on Console
- **Cloth + Synthetic Leather Bolsters seats**
- 3 Rear headrests
- 60/40 rear seats
- Bottle holder Fr & Rr doors
- 2 Fr Cup holders in console
- Front & Rear room lights
- Luggage room light
- Chrome Interior Door handles
- **Front Armrest**
- **Luggage Boards**
- **Drive Modes (Normal, Eco & Sport)**

### OPTIONS

1. **TECH PACK - €1,950 (DCT) or €1,650 (MT)**
  - ProPILOT (DCT) or Drive Assist (MT)
  - Around View Monitor + Moving Object Detection
  - Blind Spot Warning & Intervention
  - Driver Attention Alert
  - Rear Cross-Traffic Alert
  - Navigation Services
2. **NAVIGATION SERVICES - €450**
3. **METALLIC/2TONE PAINT - €600/€900**

Optional extras may impact fuel consumption, CO2 & Road Tax figures

### ENGINE

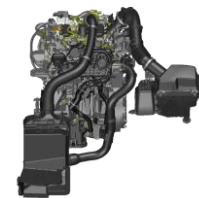
Engine	Transmission	HP	CO2	FUEL CONS.
1.0L Petrol	6 Speed Manual	114	133	5.9L
	7 Speed DCT		138	6.1L

Fuel Consumption & CO2s are tested under WLTP.

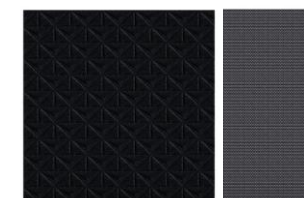
### PRICING

Variant	RRP	ROAD TAX
Manual	€29,900	€210
DCT	€31,900	€210

\*Prices exclude dealer delivery related charges



### INTERIOR TRIM



Cloth + Synthetic leather

### WHEELS



17" black + diamond cut alloy wheel



19" \*Alloy featured on image to the right is optional

# GRADE SPECIFICATION

## N DESIGN (ADDITIONONIAL TO SV PREMIUM IN **BOLD**)



### SAFETY & SECURITY

- Cruise Control
- Speed Limiter
- Intelligent Emergency Braking with Pedestrian & Cyclist Recognition
- Intelligent Lane Intervention & Warning
- High Beam Assist
- Traffic Sign Recognition
- Automatic Hazard Signal + Emergency Stop signal
- Driver and Passenger Airbags
- Front side & Curtain airbags
- Height adjustable Seat Belts
- ISO-FIX + Top Tether Rear Seats
- TPMS with 4 wheel independent info
- ABS + EBD + Brake Assist
- Vehicle Dynamic Control + Traction Control
- + Active Trace Control + Active Ride Control
- Hill Start Assist
- Spare wheel
- Peripheral Alarm
- eCall
- Rear Parking Sensors

### EXTERIOR

- LED Lamps (Fr & RR & DRL & RR Fog + LED Front Fogs)
- "Follow Me Home" Lights
- Rain Sensing Wipers
- **19" Akari Alloy Wheels**
- Electric, Heated & Auto Folding Mirrors with Indicator
- Body Coloured Door handles
- Rear Spoiler
- Privacy Glass
- Rear Brake Discs
- Sharkfin Antenna
- **Metallic Paint, Two Tone Roof + Exterior Clip On Parts**

### INTERIOR

- Auto Air Con
- iKey + Push engine start/stop button + Walk-Away Lock & Approach Unlock
- Radio + DAB + 6 speakers
- 8" Touch Screen Display
- Apple Car play
- Android Auto
- Rearview Camera
- Bluetooth + FR & RR USB + AUX + 12V
- 7" Colour Combimeter
- NissanConnect Services
- Monoform sporty seats
- Multifunctional Steering wheel
- Telescopic, Leather Steering wheel
- Leather Gear Shift
- Voice Recognition
- Paddle Shift for A/T
- Electric windows x 4 + 1 touch driver
- eHandbrake w/ Auto Hold Function
- Auto dimming rearview mirror
- Outside temperature sensor
- Driver & Passenger Vanity mirrors
- Driver & Passenger sliding/reclining seats
- Driver Seat Lifting
- Welcome/Ambient lighting on Console
- Cloth + Synthetic Leather Bolsters seats
- 3 Rear headrests
- 60/40 rear seats
- Bottle holder Fr & Rr doors
- 2 Fr Cup holders in console
- Front & Rear room lights
- Luggage room light
- Chrome Interior Door handles
- Front Armrest
- Luggage Boards
- Drive Modes (Normal, Eco & Sport)

### OPTIONS

- 1. INTERIOR PACK - €1,100**
  - Seats, Dashboard, Door panels, armrest (Black, Orange or White)
  - Ambient lighting gear console/door
  - Seat back pockets x2
- 2. BOSE® + interior Pack - €1,550 MT or €1,900 DCT**
- 3. TECH PACK - €1,950 (DCT) or €1,650 (MT)**
  - ProPILOT (DCT) or Drive Assist (MT)
  - Around View Monitor + Moving Object Detection
  - Blind Spot Warning & Intervention
  - Driver Attention Alert
  - Rear Cross-Traffic Alert
  - Navigation Services

*Optional extras may impact fuel consumption, CO2 & Road Tax figures*

### ENGINE

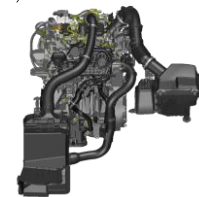
Engine	Transmission	HP	CO2	FUEL CONS.
1.0L Petrol	6 Speed Manual	114	134	5.9L
	7 Speed DCT		140	6.2L

*Fuel Consumption & CO2s are tested under WLTP and refer to Low Resistance Tyre Models.*

### PRICING

Variant	RRP	ROAD TAX
Manual	€31,900	€210
DCT	€33,900	€210

*\*Prices exclude dealer delivery related charges*



### INTERIOR TRIM\*



Optional Orange Interior Pack  
\*See SV Premium for standard N DESIGN trim

### WHEELS



19" Akari Alloy Wheels



# GRADE SPECIFICATION

## SVE (ADDITIONAL TO SV PREMIUM IN **BOLD**)



### SAFETY & SECURITY

- **Intelligent Cruise Control**
- **Intelligent Driver Alertness**
- **Propilot (DCT) or Drive Assist (MT)**
- Speed Limiter
- Intelligent Emergency Braking with Pedestrian & Cyclist Recognition
- Intelligent Lane Intervention & Warning
- **Blind Spot Intervention**
- High Beam Assist
- Traffic Sign Recognition
- Automatic Hazard Signal + Emergency Stop signal
- Driver and Passenger Airbags
- Front side & Curtain airbags
- Height adjustable Seat Belts
- ISO-FIX + Top Tether Rear Seats
- TPMS with 4 wheel independent info
- ABS + EBD + Brake Assist
- Vehicle Dynamic Control + Traction Control
- + Active Trace Control + Active Ride Control
- Hill Start Assist
- Spare wheel
- Peripheral Alarm
- eCall
- Rear Parking Sensors + **Rear Cross Traffic Alert**

### EXTERIOR

- LED Lamps (Fr & RR & DRL & RR Fog + LED Front Fogs)
- "Follow Me Home" Lights
- Rain Sensing Wipers
- **19" Alloy Wheels**
- Electric, Heated & Auto Folding Mirrors with Indicator
- Body Coloured Door handles
- Rear Spoiler
- Privacy Glass
- Rear Brake Discs
- Sharkfin Antenna

### INTERIOR

- Auto Air Con
- iKey + Push engine start/stop button + Walk-Away Lock & Approach Unlock
- Radio + DAB + 6 speakers
- 8" Touch Screen Display
- Apple Car play
- Android Auto
- Rearview Camera
- Bluetooth + FR & RR USB + AUX + 12V
- 7" Colour Combimeter
- NissanConnect Services
- Monoform sporty seats
- Multifunctional Steering wheel
- Telescopic, Leather Steering wheel
- Leather Gear Shift
- Voice Recognition
- Paddle Shift for A/T
- Electric windows x 4 + 1 touch driver
- eHandbrake w/ Auto Hold Function
- Auto dimming rearview mirror
- Outside temperature sensor
- Driver & Passenger Vanity mirrors
- Driver & Passenger sliding/reclining seats
- Driver Seat Lifting
- Welcome/Ambient lighting on Console
- **Cloth & Synthetic Leather Seats**
- 3 Rear headrests
- 60/40 rear seats
- Bottle holder Fr & Rr doors
- 2 Fr Cup holders in console
- Front & Rear room lights
- Luggage room light
- Chrome Interior Door handles
- Front Armrest
- Luggage Boards
- Drive Modes (Normal, Eco & Sport)

### OPTIONS

1. **BOSE® - €450 (MT) OR €800 (DCT)**
2. **METALLIC/2TONE PAINT - €600/€900**

Optional extras may impact fuel consumption, CO2 & Road Tax figures

### ENGINE

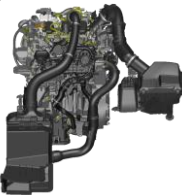
Engine	Transmission	HP	CO2	FUEL CONS.
1.0L Petrol	6 Speed Manual	114	134	5.9L
	7 Speed DCT		139	6.1L

Fuel Consumption & CO2s are tested under WLTP and refer to Low Resistance Tyre Models.

### PRICING

Variant	RRP	ROAD TAX
Manual	€32,900	€210
DCT	€34,900	€210

\*Prices exclude dealer delivery related charges

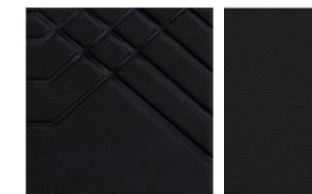


### INTERIOR

(cont.)

- **Around View Monitor with Front Sensors + Moving Object Detection**
- **Navigation Services**
- **Ambient lighting around gear console**
- **Door ambient lighting**
- **Seat back pockets x2**

### INTERIOR TRIM



Black Syntech Leather/  
Black Fabric

### WHEELS



19" Alloy Wheels



# COLOURS



## PEARL WHITE



PEARL - €600

## FUJI SUNSET RED



METALLIC - €600

## MAGNETIC BLUE



METALLIC - €600

## CERAMIC GREY



METALLIC - €600

## GUN GREY



METALLIC - €600

## BURGUNDY



METALLIC - €600

## BLADE SILVER



METALLIC - €600

## BLACK



METALLIC - €600

## RED



SOLID - €0

## WHITE



SOLID - €0

## TWO TONE PAINT - €900

### ROOF COLOUR

### BLACK



PEARL WHITE  
BLADE SILVER  
GUN GREY

FUJI SUNSET RED  
CERAMIC GREY  
BURGUNDY

### SILVER



BLACK  
BURGUNDY  
FUJI SUNSET RED

### RED



SILVER  
GUN GREY  
BLACK

### ROOF COLOUR

### BODY COLOURS

### BODY COLOURS



# N DESIGN INTERIOR PACK OPTIONS



**SILVER EXTERIOR  
PACK**



**BLACK EXTERIOR  
PACK**



**RED EXTERIOR  
PACK**



**BLACK INTERIOR  
PACK**



**BLACK INTERIOR  
PACK**



**ORANGE INTERIOR  
PACK**



**GREY INTERIOR  
PACK**



**ORANGE INTERIOR  
PACK**



**MUST ADD BOSE**



# DIMENSIONS



D - OVERALL HEIGHT

1,593

MM

A - OVERALL LENGTH

4,210

MM

B - WHEELBASE

2,636

MM

C - OVERALL WIDTH

1,983

MM

(WITH OPENED MIRRORS)



BOOT CAPACITY

422

1,477

MM

A - BOOT SPACE MAX. LENGTH

1,249

MM

B - BOOT SPACE MAX. WIDTH



Please note that every effort has been made to ensure that the contents of this publication are accurate and up-to-date at time of publication (April 2023). Nissan Ireland reserves the right to amend specification, colours, trims, options and pricing etc. without notice. This guide is not a contractual document or offer of sale. Images contained within are for illustration purposes only. Please contact your local Nissan dealer to discuss the latest product and pricing information.